

# Japan's Submission to the CLCS

23 November 2009

PEMSEA Theme1 WorkShop3

Masahiro Akiyama

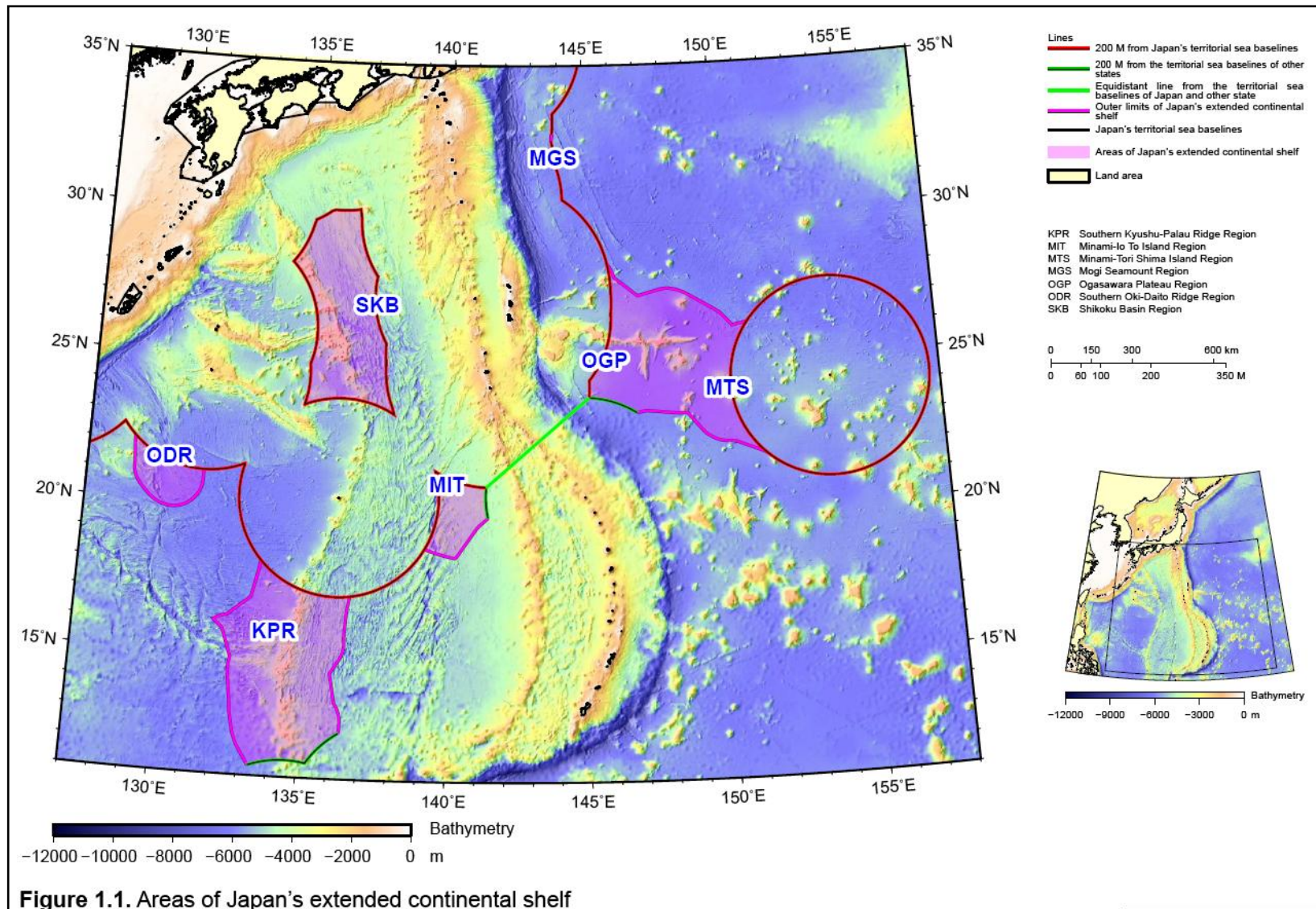
# 1. Japan as an Ocean State

- Land Area: 380,000 km<sup>2</sup>
  - (World's 60<sup>th</sup> -largest)
- Area of territorial sea and EEZ: 4,470,000 km<sup>2</sup>
  - (World's 6<sup>th</sup>-largest )
    - Number of remote islands: 6,847 islands
- Length of coastal line: 35,000 km
  - (World's 6<sup>th</sup>-longest)

## 2. Delineation of the outer limits of the continental shelf for Japan

- Survey and Analysis
- Drafting and Finalization
- Submission the information on its extended CS to the CLCS in November 2008
- Presentation to the CLCS in March 2009
- Examination by CLCS
  - Plenary
  - Subcommission since September 2009
  - Plenary
- Recommendation

### 3. Areas of Japan's extended continental shelf



Japan's Executive Summary is available at UN DOALOS website;  
[http://www.un.org/Depts/los/clcs\\_new/submissions\\_files/submission\\_jpn.htm](http://www.un.org/Depts/los/clcs_new/submissions_files/submission_jpn.htm)

# 4. Establishment of the outer limits of Japan's continental shelf beyond 200NM

- In Seven Regions
  - The Southern Kyushu-Palau Ridge Region (KPR)
  - The Minami-Io To Island Region (MIT)
  - The Minami-Tori Shima Island Region (MTS)
  - The Mogi Seamount Region (MGS)
  - The Ogasawara Plateau Region(OGP)
  - The Southern Oki-Daito Ridge Region (ODR)
  - The Shikoku Basin Region (SKB)
- Those areas cover:
  - 740,000 km<sup>2</sup>

- Specific provisions of article 76 invoked to support the submission
  - Para 4(b)
  - Para4(a)(ii)
  - Para 5
  - Para7
- Potential overlap on relevant maritime delimitations
  - The United States of America
  - The Republic of Palau
- Relevant state bodies
  - MOFA/MEXT/METI/JCG
  - JAMSTEC/AIST/JOGMEC

## 5. Some Discussions

- The potential overlap
  - The United States of America
  - The Republic of Palau
- Note verbale
  - From China (February 6, 2009)
  - From the Republic of Korea (February 27, 2009)

- Note submitted by Japan
  - To the preliminary information by China (July 23, 2009)
  - To the preliminary information by the Republic Korea (July 23, 2009)